



What Symptoms are Covered?

NEWTON homeopathics® **Flu Care** is formulated for symptoms associated with colds and flu such as aches, discomfort, fatigue, vomiting and cramping.

What are the ingredients?

NEWTON homeopathics® **Flu Care** contains a combination of homeopathic single remedies that may be administered for common flu symptoms. **Flu Care** also contains homeopathic Influenzinum made from various flu vaccine strains.

What is homeopathic Influenzinum?

According to the Homeopathic Pharmacopoeia of the United States (HPUS), homeopathic *Influenzinum* must be made from the inactivated influenza virus vaccine designated by WHO. It is believed that this homeopathic influenza carries the molecular imprint of the proteins and other constituents of the pathological agent. The effectiveness is based on the theory that the immune system is sensitized to these signature "imprints" without being exposed to the virulence of the living agent. Optimally, the body's own natural defenses fight against the offending virus, bacteria or other pathological agent.

Can it be used for flu prevention?

Although NEWTON makes no claim that our product will "vaccinate" you against the flu, homeopathic *Influenzinum* has historically been used during epidemics and in preparation for the modern vaccination process. **Flu Care** may be administered once a day, and increased as needed or as directed by a health professional.

Is it safe and are there side effects?

There are no known food, drug or herbal interactions, and no known side effects or physical addiction.

Warnings: Keep out of reach of children. Do not use if tamper-evident seal is broken or missing. If symptoms worsen or persist for more than a few days, consult a doctor. If **pregnant or breast feeding**, ask a doctor before use.



Welcome to Homeopathy

Homeopathy, a complete system of healing with its own method of diagnosing and its own special remedies, was developed by Dr. Samuel Hahnemann over 200 years ago. Homeopathics have no known harmful side effects, may be used by everyone, including pets, and can be administered for both acute and chronic conditions.

Homeopathics are made from small amounts of plant, animal and mineral substances prepared by a process whereby a minute amount of substance is highly diluted and succussed (vigorously shaken). Scientists have theorized that homeopathy may function similar to the way enzymes or hormones function in the body. Although they are found in similar minuscule amounts, they are believed to have very powerful effects.

People are returning to homeopathy because they understand that in order to achieve health, one must discover the root cause of disease and not just treat the symptoms. Many understand that pharmaceutical drugs often interfere with the body's natural ability to heal itself. Suppressing, or merely removing symptoms, is a temporary solution. Addressing the whole person naturally is the long-term solution to modern states of disease. We believe this is the role of homeopathy.

NEWTON homeopathics® are the result of advanced evolution in the use of homeopathic remedies in Europe, especially in Belgium, France and Germany. Starting in the mid-1800s, through the beginning of the 20th century, the French homeopaths developed the technique of draining toxins from the body. Dr. Luc took this idea and combined it with the concept of complex remedies. The use of such a complex saved his life and led to the development of the wide range of NEWTON homeopathics®.



NewtonHomeopathics ~ NewtonHomeopath



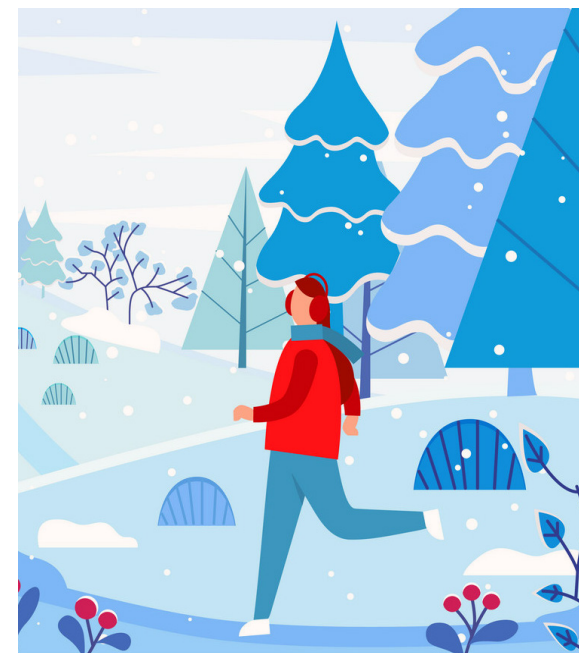
NEWTON homeopathics® product uses are based on traditional homeopathic practice. Products/reviews/indications have not been evaluated by the FDA nor for scientific-medical evidence. Product results are not based on randomized, controlled clinical trials (RCTs).

©2025 Newton Laboratories, Inc., Conyers, GA 30013 FDA Est# 1051203 Rev. 12/24

NEWTON
homeopathics®
Nurturing Naturally Since 1987™

Winter Wellness

Encouraging Health & Promoting Balance™



A Homeopathic Approach To Flu Season

newtonlabs.net
800.448.7256
csr@newtonlabs.net

Manufactured in America
Woman/Veteran-Owned





NEWTON homeopathics® **Flu Care** contains homeopathic *Influenzinum* made from several strains. All years' strains are sourced from INFLUVAC's inactivated influenza virus vaccines that are issued as directed by WHO. The ever-changing mutations of influenza make it virtually impossible to assess the usefulness of a particular strain within that same year of disease transmission. However, homeopathy is believed to work on the energetic level, therefore any given homeopathic *Influenzinum* is thought to be applicable for most varieties of influenza.



For self-limiting conditions not requiring the guidance of a health professional, NEWTON offers over 100 combination remedies for your entire family and pets.

Homeopathic Approach

Homeopathic *Influenzinum* is made from a variety of World Health Organization (WHO) - designated influenza vaccines.

Additional homeopathic remedies are included to address the most common flu symptoms. **Flu Care** active ingredients are listed below. HPUS indicates the ingredient is in the official Homeopathic Pharmacopeia of the United States.

***Aconitum napellus* HPUS:**

Fever; Chills; Hoarse dry cough.

***Aralia quinquefolia* HPUS:**

Drowsiness with headache.

***Arsenicum album* HPUS:**

Fevers; Exhaustion and restlessness with nightly aggravation.

***Baptisia tinctoria* HPUS:**

Indescribable sick feeling all over; Feeling of soreness, heaviness and aching of muscles.

***Bryonia* HPUS:**

Headaches; Nausea.

***Cinchona officinalis* HPUS:**

Fever; Pains in limbs and joints.

***Echinacea* HPUS:**

Sore throat; Chilliness with nausea; Aching in limbs.

***Eupatorium perfoliatum* HPUS:**

Soreness of muscles; Fever; Thirst.

***Gelsemium sempervirens* HPUS:**

Colds; Aching, tiredness, heaviness, weakness and soreness especially in muscles of the limbs; Sneezing; Drowsiness.

***Histaminum hydrochloricum* HPUS:**

Headaches; Coughing fits; General chills, shivering, alternating with feeling of heat.

***Influenzinum* HPUS:**

Fever; Headache; Weakness and fatigue; General ill feeling with chill, headache; Dry cough.

***Ipecacuanha* HPUS:**

Persistent nausea and vomiting; Eyes red, inflamed; Cough.

***Kali carbonicum* HPUS:**

Colds; Coughs.

***Nux vomica* HPUS:**

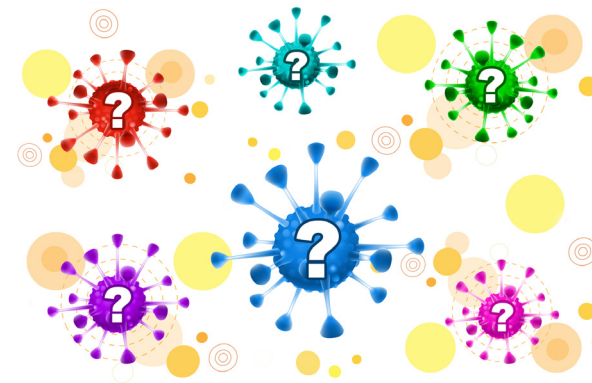
Fever.

***Phosphorus* HPUS:**

Colds; Coughs.

***Rhus toxicodendron* HPUS:**

Fevers; Dry, teasing cough.



Which flu strains are included?

- A/California 7/2003 H3N2
- A/California/7/2009 H1N1 pdm09-like virus
- A/Moscow 10/99-like H3N2
- A/New Caledonia 20/99 H1N1
- A/Panama 2007/99 H3N2 which is an A/Moscow 10/99-like virus
- A/Perth 16/2009 H3N2-like virus
- A/Switzerland/9715293/ 2013 (H3N2)-like virus B/Sichuan 379/99-like antigens
- A/Victoria/361/2011 H3N2-like virus derived from
- A/Texas/50/2012
- A/Wisconsin 67/2005 H3N2 (A/Wisconsin 67/2005 and A/Hiroshima 52/2005
- A/Wyoming 03/2003 H3N2 which is an A/Fujian 411/2002-like virus
- B/Brisbane 60/2008-like virus
- B/Hong Kong/330/2001-like virus
- B/Malaysia 2506/2004-like virus (B/Malaysia 2506/2004 and B/Ohio 1/2005)
- B/Massachusetts/02/2012
- B/Phuket/3073/ 2013-like virus.
- B/Shanghai 361/2002-like virus
- B/Wisconsin/1/2010-like virus (from the B/Yamagata lineage of viruses)

